

MONTHLY MEMBERSHIP PROGRESS REPORT

LOCATION INDIA

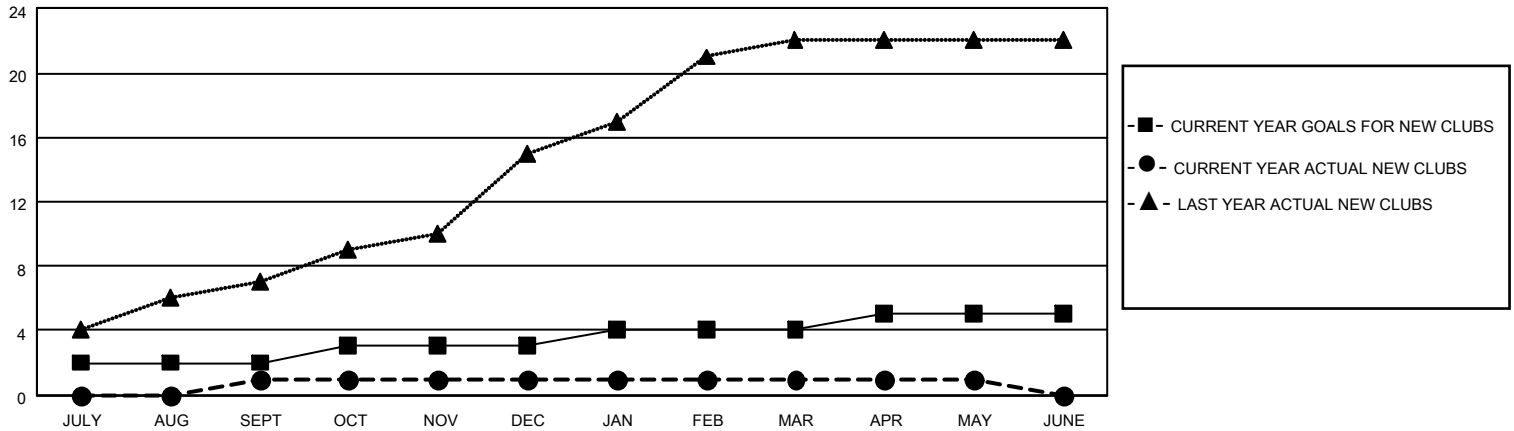
District 3232 J

Results as of: 5/31/2023

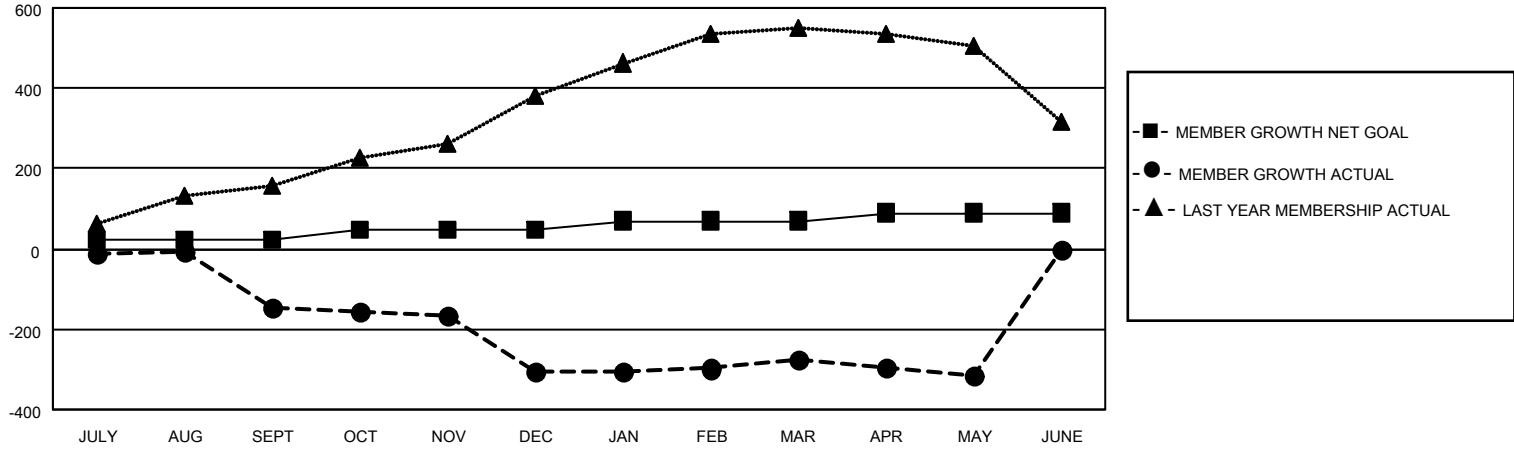
Clubs			
RESULTS FOR 2022-2023			
QUARTER	NEW CLUB GOAL	NEW CLUBS	DROPPED CLUBS
JULY/AUG/SEPT	2	1	1
OCT/NOV/DEC	1	0	3
JAN/FEB/MAR	1	0	0
APR/MAY/JUNE	1	0	2

Members			
RESULTS FOR 2022-2023			
QUARTER	MEMBER GROWTH NET GOAL	MEMBER GROWTH ACTUAL	DROPPED MEMBERS ACTUAL (including transfers)
JULY/AUG/SEPT	25	52	187
OCT/NOV/DEC	25	8	161
JAN/FEB/MAR	20	82	19
APR/MAY/JUNE	20	27	58

GOALS AND ACTUAL NEW CLUBS CUMULATIVE



GOALS AND ACTUAL MEMBERS CUMULATIVE



DROPPED CLUBS: 6	
DROPPED MEMBERS	
DECEASED	6
CLUB CANCELLED	73
OTHER	346
TOTAL	425

29 CLUBS OF 80 ADDED 1 OR MORE NEW MEMBERS

[CLICK HERE FOR CUMULATIVE MEMBERSHIP DATA](#)

<u>GENDER DISTRIBUTION</u>	
MALE	1,884 (75.18%)
FEMALE	622 (24.82%)
NON BINARY	0 (0.00%)
PREFER NOT TO ANSWER	0 (0.00%)
TOTAL FAMILY UNIT MEMBERS	1,576
FAMILY MEMBERS PAYING HALF DUES	980